



The Bonvilston

4 Bedroom detached (En suite)
1295 sq ft (120 sq m)

llanmoor-homes.co.uk

A space to call home

With its 3 double bedrooms and 1 single as well as some superb features such as a spacious dining area with french doors to the rear garden, en suite to bedroom 1 and integral garage, the Bonvilston represents modern living at its best.

Beautiful and built to last.

Specification

- Kitchen/dining area with french doors to rear garden
- Separate utility
- Double oven, hob, extractor fan and fridge freezer
- 3 Double bedrooms
- 1 single bedroom
- En suite to bedroom 1
- Family bathroom
- Integral garage
- NHBC ten year warranty



Detached



3 Double



1 Single



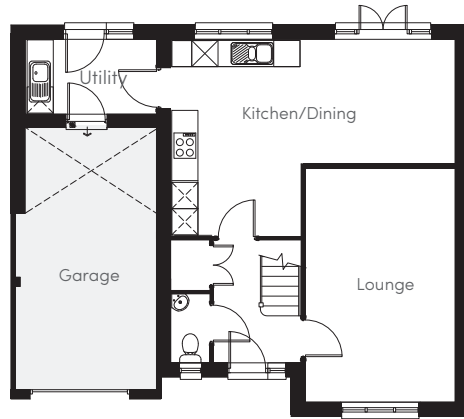
1 En suite



1 Bath

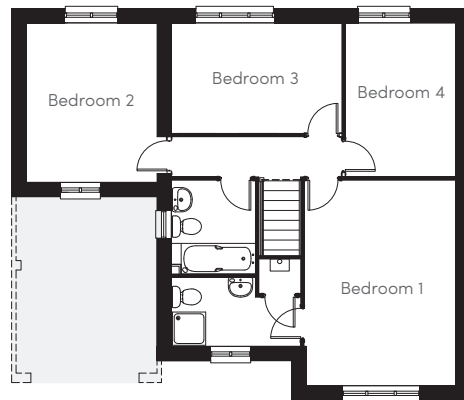


THE BONVILSTON



Ground Floor

Lounge 17' 2" x 10' 10"	Cloaks 2' 9" x 5' 1"
Kitchen/Dining 14' 7" x 21' (max) 9' 8" (min)	Garage 10' 6" (max) x 19' 7"
Utility 5' 7" x 9' 8"	



First Floor

Bedroom 1 11' 2" x 15' 2"	Bedroom 3 12' 7" x 8' 1"
En suite 9' 3" (max) x 5' 2"	Bedroom 4 11' 4" x 8' 1"
Bedroom 2 11' 7" x 9' 6"	Bathroom 6' 3" x 7' 1"

Llanmoor Homes

For current availability
and Sales Office opening
times visit us online

llanmoor-homes.co.uk

Head office **01443 228 413**

llanmoor-homes.co.uk  

These particulars are for illustration only. We operate a policy of continuous product development and individual features such as windows, garages and elevational treatment may vary from time to time. Consequently these particulars should be treated as a general guidance only and cannot be relied upon accurately describing any of the Specified Matters prescribed by any Order made under the Property Misdescriptions Act 1991. Nor do they constitute a contract, part of any contract or a warranty.

OVER
50
YEARS



Virtual Reality tour available for this property on llanmoor-homes.co.uk

Llanmoor Development Co. Limited -
63-65 Talbot Road, Talbot Green, Pontyclun, Rhondda Cynon Taff CF72 8AE