

# Llanmoor *HOMES*



JUST FOUR BEAUTIFUL NEW  
2 & 3 BEDROOM HOMES

Introducing

## Clos-Y-Carw

Llantwit Fardre, Pontypridd CF38 2BP



## Clos-Y-Carw

An exciting development of **just four** 2 & 3 bedroom homes located in Llantwit Fadre. These beautiful new homes offer the highest quality alongside stunning home designs.

### SPECIFICATION

- Award winning quality
- Convenient location
- Energy efficient heating system
- Sigma 3 kitchens
- Modern wall tiles & Sanitary ware
- Juliet Balcony to Bedroom 1 & 2
- Attached Garage to House type B
- Decking area to rear garden
- NHBC Ten year warranty

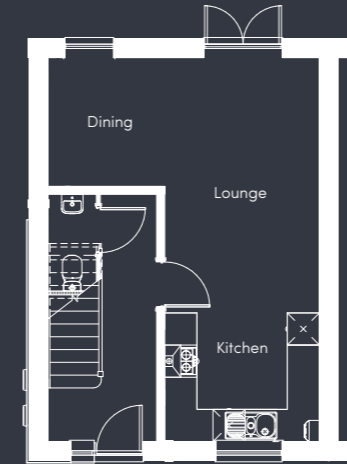


## The Ashton

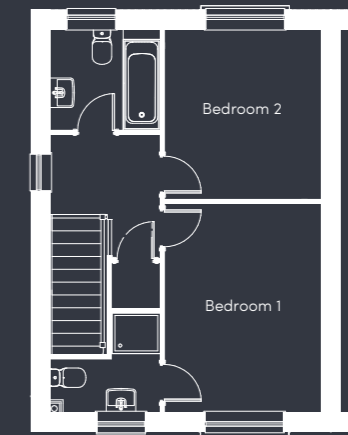
2 bedroom semi-detached home with ensuite bedroom and driveway



### GROUND FLOOR



### FIRST FLOOR



### MEASUREMENTS

Lounge/Dining  
16' 7" x 15' 7"

Kitchen  
9' 6" x 7' 10"

Bedroom 1  
9' 7" x 12' 10"

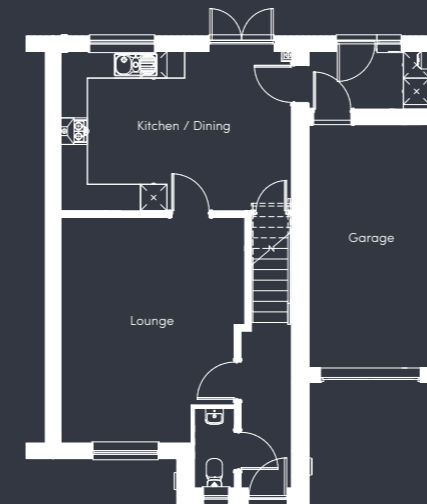
Bedroom 2  
9' 7" x 10' 5"

## The Ashwood

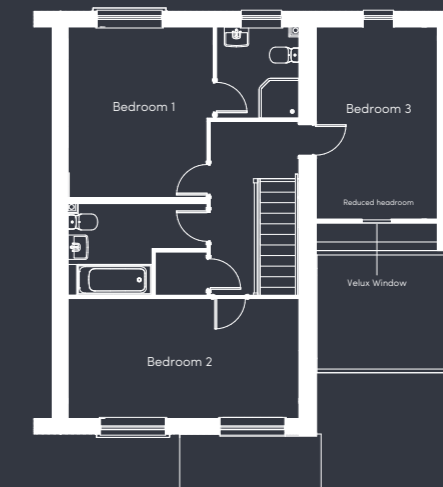
3 bedroom semi-detached home with ensuite bedroom, utility, garage and driveway



### GROUND FLOOR



### FIRST FLOOR



### MEASUREMENTS

Kitchen/Dining  
17' 1" x 11' 10"

Lounge  
13' 8" x 16' 9"

Garage  
9' 12" x 18' 1"

Bedroom 1  
10' 9" x 12' 8"

Bedroom 2  
17' 1" x 8' 11"

Bedroom 3  
9' 0" x 14' 3"



