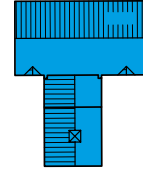


Eglwys Nunydd

MARGAM

The Cadog

1,944 ft² (180 m²)



Overview

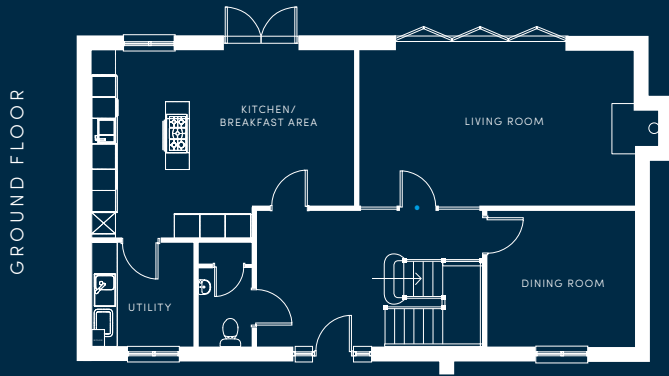
The Cadog is a superb detached home within a spacious plot. With 3 double and 2 single bedrooms plus an abundance of the special features you'd expect from award-winning house builders, such as glazed wall and door to the living area. A unique feature to the Cadog is the detached double garage with open sheltered underpass leading to the doorway.

Modern living at its best.

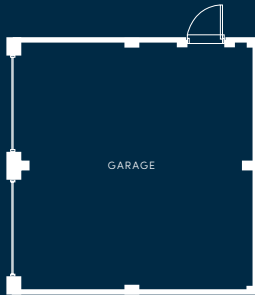
Eglwys Nunydd

MARGAM

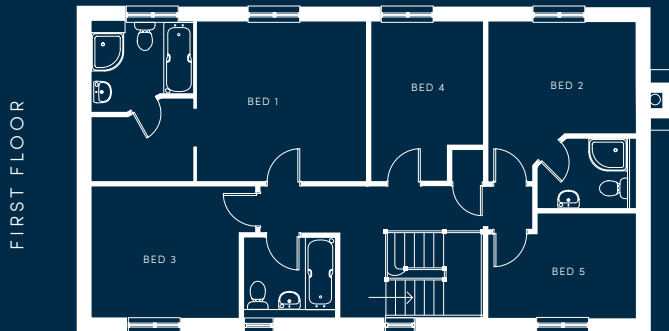
The Cadog



UNDERPASS



Kitchen	14'6" x 12'6"
Breakfast Room	8'0" x 12'0"
Utility	8'0" x 8'3"
Living Room	21'3" x 12'0"
Dining Room	11'4" x 10'5"



Bedroom 1	13'11" x 12'4"
Dressing Room	6'1" x 7'8"
En suite	7'0" x 7'8"
Bedroom 2	11'5" x 12'4"
En suite	7'7" x 5'5"
Bedroom 3	10'3" x 11'3"
Bedroom 4	8'8" x 12'4"
Bedroom 5	11'4" x 8'2"
Bathroom	7'1" x 6'5"

- Ash framed glazed door and side panels

High End Specification

- Spacious living areas
- Chesneys log burner to lounge
- Traditional slate tiled roof
- Masterclass Kitchens by Sigma 3
- Porcelanosa wall & floor tiles
- Beautiful Sottini Sanitary Ware by Ideal Standard
- Neff kitchen appliances
- Detached double garages (with underpass to Cadog)
- Rainwater harvesting / recycling system
- Energy efficient heating systems
- NHBC ten year warranty

The Cadog

- Kitchen/breakfast area with french doors to rear garden
- Ash framed glazed door and side panel from hallway into living room
- Bifold doors to rear garden from living room
- 3 Double bedrooms, 2 singles
- En suite and dressing room to bedroom 1
- En suite to bedroom 2

A development by

Llanmoor
Homes